



## How to ACCESS...

For probation referrals, young men must have a probation order that directs them to attend a full-time alcohol and drug treatment program. The order must be long enough to see them through the 4-month program. Access is province-wide.

To make a probation referral simply complete and fax the referral package available at [www.plea.ca](http://www.plea.ca) or by calling: **604 585 9195** and fax it, along with a copy of the youth's probation order, to: **604 585 7976**.

We also accept private referrals from parents, social workers, community-based addiction counsellors and other professionals. Access is nationwide.

To make a private referral the first step is to contact us at: **604 897 3761**.

“The kindness, consistency and dedication of many of the PLEA staff have been instrumental in assisting clients make positive changes in their lives.”

Referral Source



# Waypoint

Addictions treatment for young men

## Who funds us

Probation referrals are funded by MCFD (Ministry of Children and Family Development) and are an alternative to custody.

## For more information

### PLEA Community Services Society of BC

Bernie Agg Centre

3984 Commercial Street

Vancouver, BC, Canada, V5N 4G2

T: 604 871 0450

F: 604 871 0408

E: [info@plea.bc.ca](mailto:info@plea.bc.ca)

[www.plea.ca](http://www.plea.ca)



Charitable registration # 10781 0467 RR0001

Please note the images used by PLEA are stock images used solely for illustrative purposes. Any person depicted in the images is a model.

bcgeu

July 2015



# Waypoint

## Addictions treatment for young men



## WHO we serve...

**Waypoint** is a unique four-month residential treatment program that serves young men aged 12 to 18 whose substance use is problematic.



## WHAT we do...

The young men accessing Waypoint live with PLEA Family Caregivers in the community and participate in day, evening and weekend programming at our treatment centre in Surrey.

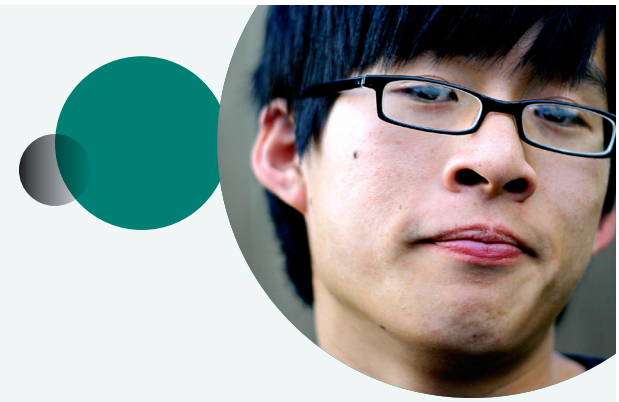
On average, one or two youth live in each home. The Family Caregivers are members of our treatment team who support and reinforce what the youth learn while they are at the centre. They are also trained to support youth through detox, stabilization and the treatment process.

## WHY we do it...

At Waypoint we strive to increase each youth's self-esteem, physical and mental health; educational and vocational functioning and family and social functioning; and decrease their substance use, high-risk behaviours and involvement in criminal activities.

“PLEA has helped me see how I can have a future without crime and drugs.”

Program Participant



## How we work...

Programming is tailored to each youth's individual strengths, needs and circumstances.

It includes individual and group counselling, teacher-supervised education, addiction awareness learning and practical life-skills.

A range of social, arts, cultural and recreational activities are integral components of the program and take place in the community.

A School District #36 teacher (Surrey) delivers the educational component.

We follow a strengths-based and culturally sensitive approach to treatment, and emphasize social learning and solution focused interventions to help the youth build the skills and competencies they need to live safe, healthy lives. Our model is gender-specific, addressing the learning styles and developmental needs of young men.